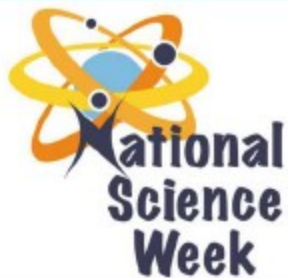




**In the footsteps of Sir Ernest Shackleton:
Experiences during the 2019 Weddell Sea
Expedition
Speaker: Prof T. Bornman**



When & Where:

01 August 2019

Weaver Inn Hall

Ocean Sciences Campus,
NMU

Time: 14:00 – 15:00

RSVP: jennifer@saeon.ac.za

nozipiwo@saeon.ac.za

Tel: 041 504 3966



**Our reefs, our fish and climate
change**

Speaker: Dr Shirley Parker-Nance



**science
& technology**

Department:
Science and Technology
REPUBLIC OF SOUTH AFRICA



SAASTA
South African Agency for Science
and Technology Advancement



SAEON
South African Environmental
Observation Network

NELSON MANDELA
UNIVERSITY

Change the World

mandela.ac.za

Emerging oceanographers present exciting plans for understanding the Benguela Current and the East coast Canyons using numerical models.

SPEAKER: Gustav Rautenbach

“The Role Submarine Canyons Play on Upwelling”

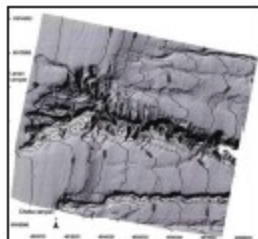


Image from Green (2009)



1st August 2019

15:00-15:40

Weaver Inn Hall

Ocean Science Campus

Nelson Mandela University

NELSON MANDELA
UNIVERSITY



SPEAKER: RUDZANI SILIMA

“The Analysis of the southern Benguela upwelling system using a numerical model”

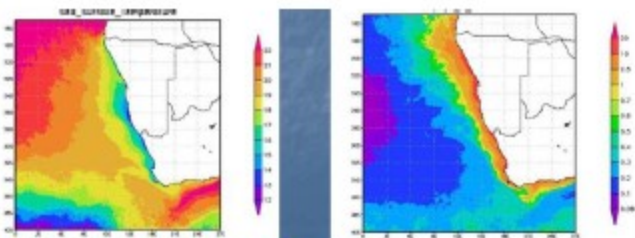


Image courtesy of Brooks & Cole(2002)